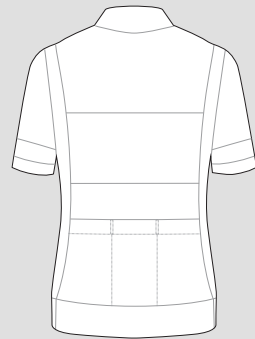


**TRADITIONAL SHORT SLEEVE WOOL JERSEY**

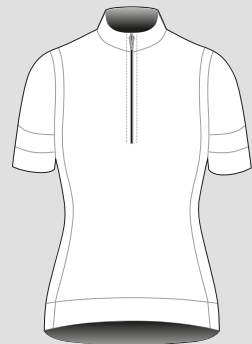
MEN'S FRONT



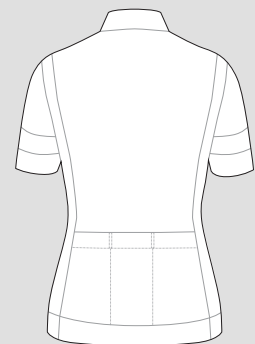
MEN'S BACK



WOMEN'S FRONT



WOMEN'S BACK

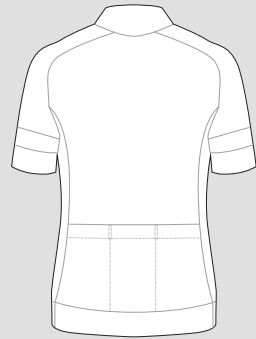


**RAGLAN SHORT SLEEVE WOOL JERSEY**

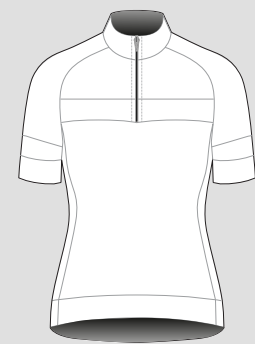
MEN'S FRONT



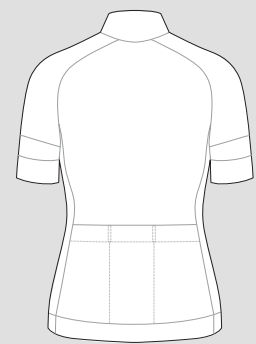
MEN'S BACK



WOMEN'S FRONT

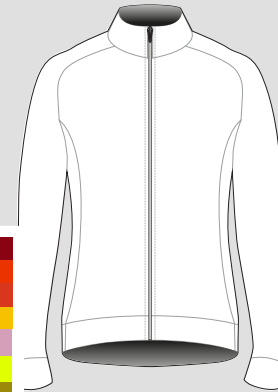


WOMEN'S BACK

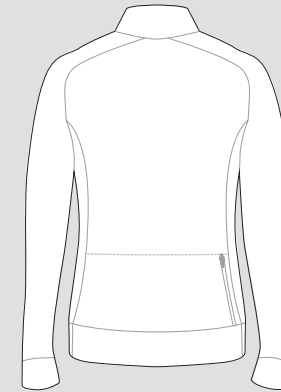


**WOOL CYCLING JACKETS**

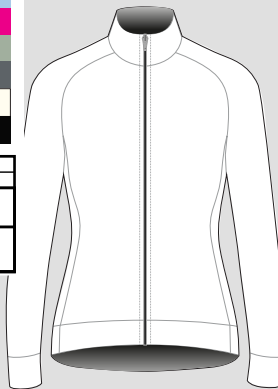
MEN'S RAGLAN - FRONT



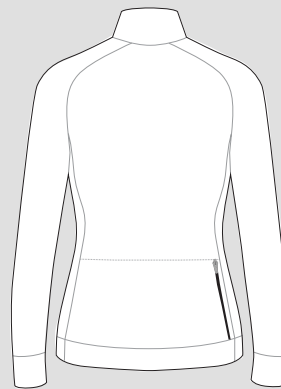
MEN'S RAGLAN - BACK



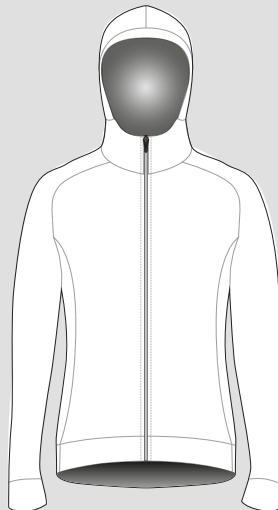
WOMEN'S RAGLAN - FRONT



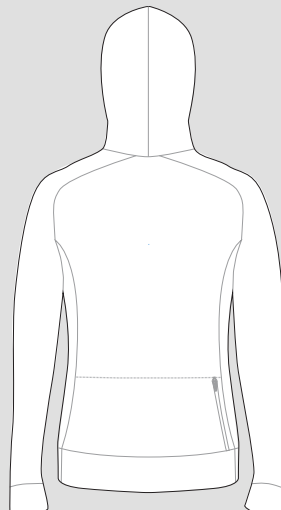
WOMEN'S RAGLAN - BACK



HOODIE - FRONT



HOODIE - BACK



**GENERAL DESIGN CONSIDERATIONS**

1. Stripes can be added as desired. Additional charges may apply by quantity.
2. Side panels (either classic or raglan) are not optional, and feature in all designs.
3. All jerseys are made in-house in Oviedo, Spain.

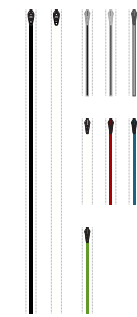
**EMBROIDERY:**

1. Simple, iconic logos and text yield best results and a classic aesthetic.
2. Embroidery is charged by machine time (more time = increased cost).

**CAPS:**

1. Cap sides are always made with woven wool (Blk or Grey) Front, back and brim can use knit merino textiles and colours listed below.

**ZIPPERS - YKK COIL ZIPPERS MADE IN SPAIN**



**DESIGN CONSIDERATIONS:**

1. Jerseys available with ~8" chest zip or full zip. Full zip is a small upcharge (cost qty dependant)
2. Jackets are made with 5mm reverse coil zip.
3. Jackets feature rear zip rando pocket, default right.
4. Custom zippers available with qty restrictions

**ZIPPER STOCK COLOURS:**

#8 zip (chest/rando) Full Zip (Std. + Rev.)

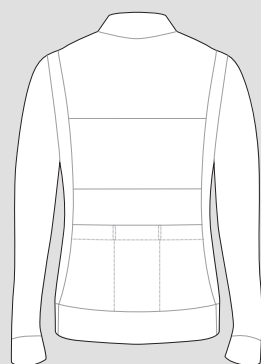


**TRADITIONAL LONG SLEEVE WOOL JERSEY**

MEN'S FRONT



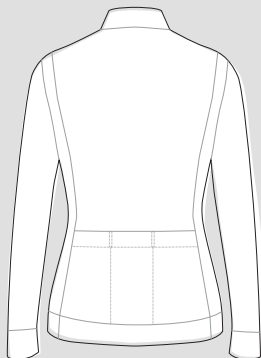
MEN'S BACK



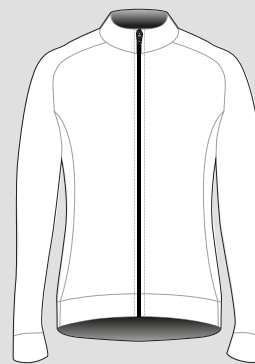
WOMEN'S FRONT



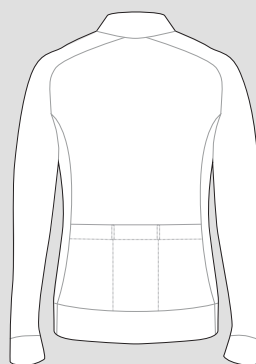
WOMEN'S BACK



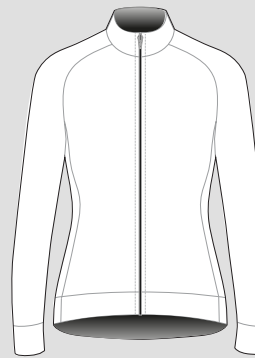
MEN'S FRONT



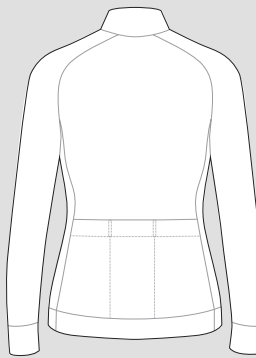
MEN'S BACK



WOMEN'S FRONT



WOMEN'S BACK



ITEM STYLE:	NOTES:	MATERIAL:	PPU:
S/M/L	W X S/M/L	100% Wool	
MED	W S/M/L		
LRG	W MED		
XL	W LRG		
XXL	W XL		
OTHER	OTHER		

STOCK CHECK:	
Wool:	<input type="checkbox"/> Re-Stock
Zipper:	<input type="checkbox"/> Re-Stock
Thread:	<input type="checkbox"/> Re-Stock
Tags:	<input type="checkbox"/> Re-Stock
Elastic:	<input type="checkbox"/> Re-Stock

**WOOL - 285 GSM, MID-WEIGHT EUROPEAN MERINO**

**BODY SWATCHES**



**TRIM SWATCHES (LTD. QTY.)**

