



USING THE TEMPLATE

GENERAL NOTES:

// This template is editable with Adobe Illustrator or any vector-edit app. Edit only the 'colors' or 'zippers' work layers. The template can also be printed as a worksheet.

// This template is for the family of short sleeve, 285gsm (midweight) jerseys. 285 jerseys are best for cool weather garments or heritage style, vintage-weight garments.

// This template features 3 different patterns within this family of garment, each with a slightly different sleeve treatment. The unique sleeve/side panel treatment is highlighted in pink and is best used as follows:

1. CHOOSE YOUR PATTERN

RAGLAN SLEEVE:

// Raglan sleeve jerseys are our default recommendation for a 285 jersey. It is characterized by a curved seam line from the underarm up to the collar with no seam on top of the shoulder. It fits best the widest range of shoulder shapes. All Raglan jerseys have side panels providing structure for the sides of back pockets for more durability.

SET-IN SLEEVE:

// The Set-in sleeve is a very familiar sleeve like those used on a T-shirt. Our basic set-in pattern has no side panels and is best for stripes/panels that wrap the entire circumference of the jersey uninterrupted. Pockets are simply top-stitched onto the back panel of the jersey.

HERITAGE SIDE PANEL:

// This pattern features set-in sleeves attached to a large side panel recommended *only* for contrasting color side panels designs. This color/blocking was popular in 70's cycling jerseys like Ti-Raleigh, 7-Eleven, and Fancucini etc. Pockets are sewn into side panels as with Raglans.

2. CHOOSE YOUR COLORS*

// Working on the 'colors' layer, select the panel you'd like to change and use the eyedropper to select from our stock colors. 'Body' colors are kept in large stock qty, 'Trims' are recommended for stripes and highlights to avoid delays.

BODY COLORS

BLACK PANTONE 6 PC	SLATE GREY PANTONE 447 C
LIGHT GREY PANTONE 442 C	VINTAGE WHITE PANTONE 11-0105 TCX
ROYAL BLUE PANTONE 9025C	YELLOW FLOU PANTONE 381 C
RACING RED PANTONE 2347 C	DARK OLIVE PANTONE 5747 C

TRIM COLORS

DEEP PURPLE PANTONE 669C	FOREST GREEN PANTONE 553 C	
LT OLIVE PANTONE 112 C	CELESTE PANTONE 571 C	
HONEY BROWN PANTONE 1535C	BLOOD RED PANTONE 7623 C	
FLANDERS PANTONE 7400 C	HEATHER GREY PANTONE 421 C	

* In quantities of 40pcs+ we can order custom colors

3. ADD PANELS OR STRIPES

// We can easily add stripes or panels, such as a chest stripe for embroidery. Simply just draw them in place on the colors layer and attribute a color to the shape. Stripes and panels incur a small cost per each panel, so numerous stripes can get costly.

4. ADD EMBROIDERED TEXT/LOGOS/ICONS

// For the best finish, highest quality and most versatility we customize with embroidery. Embroidery is stitched, so it is best used for text, simple icons and shapes. Less is More! Embroidery is charged by machine time, so more embroidery or the larger the shapes, the higher the cost. We offer both Satin-stitch and Chainstitch embroidery, with chainstitch best for large, vintage-style text.

5. ADD FEATURES (ZIPPERS, COLLARS, POCKETS)

// We can offer a selection of custom features such as polo collars, zipper pockets or full zip jerseys. Each of these can be added to your design at a small additional cost.



Stock Zipper Colors: Custom colors can be ordered by request (Min 13 pcs)

6. SUBMIT YOUR DESIGN FOR REVIEW & QUOTE

// Once you have finished your design(s) you can submit them to us for review. We will comment on suitability of design for mfg. and make suggestions if needed. We can also add features by request in writing. In any event, we will reproduce your design to correspond with our process and provide a quote. It is required that we get your approval and produce a sample jersey to proceed.

All concepts are copyright Cima Coppi Cycle Wear C.B. and are not to be copied or reproduced in any matter or medium without express written consent until paid for in full and transfer of rights ensues. We reserve the right to invoice for design services and/or production fees incurred during conceptualization even in the case of when a production order is not placed nor fulfilled. Any and all sewing patterns created for the production of any project remain property of Cima Coppi Cycle Wear C.B. and are non-transferable.

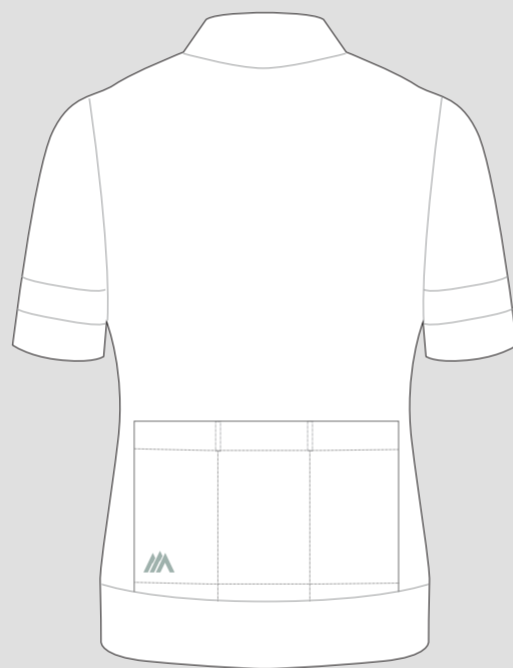
285 SS JERSEY TEMPLATE

285 SS RAGLAN SLEEVE JERSEY



PREPARED FOR

285 SS SET-IN SLEEVE JERSEY



PREPARED FOR

285 SS HERITAGE SIDE PANEL



PREPARED FOR

